

STATEMENT
OF
QUALIFICATIONS

 **RESOURCE**
INTERNATIONAL, LTD.
ENGINEERS ● SCIENTISTS ● SURVEYORS ● PLANNERS



Headquarters - 9560 Kings Charter Drive * Ashland, VA 23005

(804) 550-9200 * Fax (804) 550-9259

Greenbrier Tower II - 870 Greenbrier Circle, Suite 114 * Chesapeake, VA 23320

(757) 873-7711 * Fax (757) 873-7712

www.resourceintl.com

Table of Contents

1. Introduction

2. Client Appreciation Letter

3. Experience

4. Contacts



MISSION STATEMENT

“We challenge ourselves to rethink the traditional,

To apply innovative and sustainable technology,

And to identify creative engineering and environmental solutions,

In order to earn our clients for life.”

Our Corporate Challenge

“Be the Best, Make it Personal, NOW.”

TWO OFFICES READY TO SERVE YOU:

9560 Kings Charter Drive
P.O. Box 6160
Ashland, VA 23005-6160
(804) 550-9200

Greenbrier Tower II
870 Greenbrier Circle, Suite 114
Chesapeake, VA 23320
(757) 873-7711

www.resourceintl.com

QUALIFICATIONS

1 INTRODUCTION

All churches are different. This may be due to location, vision, ministries, average age of congregants, year established or the style of worship services. Even growing churches which are similar have different needs. Yet, all growing churches have a similar need: civil engineers.

Growing churches may need more parking, more educational space, more worship service space, more restrooms, more recreational areas or more property. Maybe your church is thinking about a family life center, sponsoring Upward Sports teams, constructing senior living facilities or accepting land gifts from the members. If your church is considering expansion and you desire an individual consultation, we would like to talk with you about our services.

Resource International, Ltd. (Resource) provides engineering and consulting services to religious, institutional, and educational clients. Since 1979, the company has grown to a staff of over 30 in two offices located in Ashland and Hampton Roads, Virginia.

Resource's experienced team of engineers, planners, and scientific professionals provides complete services to realize the development vision of our clients. Our commitment to quality design is exemplified through the following blend of assets:

- Thirty years of religious, institutional and educational design.
- Engineers who are Bible College graduates, Sunday School teachers or group leaders.
- Planners experienced in urban and suburban settings.
- Experienced in layout and design of expanded sites.
- Innovative water and wastewater system designers for rural sites.
- Experienced in rezoning and other entitlements.
- Experienced in securing regulatory approvals.
- Professionals working to achieve sustainable development.

For more information, please visit our web site (www.resourceintl.com) and click on the link marked Churches.

We employ a broad, experienced team of professionals including:

- Civil Engineers
- Environmental Engineers
- Land Planners
- Landscape Architects
- Land Surveyors
- Transportation Specialists
- Utility Engineers
- Wetland Scientists

***“Suppose one of you wants to build a tower. Will he not first sit down and estimate the cost....? “
Luke 14:28 (NIV)***

TWO OFFICES READY TO SERVE YOU:

9560 Kings Charter Drive
P.O. Box 6160
Ashland, VA 23005-6160
(804) 550-9200

Greenbrier Tower II
870 Greenbrier Circle, Suite 114
Chesapeake, VA 23320
(757) 873-7711

Western Hanover Church

Western Hanover Church

PO Box 44
Montpelier, VA 23192
804.651.2369
tdsharpe8@embarqmail.com

Terry M. Sharpe, Pastor

November 20, 2008

LETTER OF REFERENCE AND RECOMMENDATION

To Whom It May Concern:

It pleases me to write this Letter of Introduction and Recommendation on behalf of Resource International, Ltd. at 9560 Kings Charter Drive, Ashland, VA 23005. Western Hanover Church began its relationship with Resource International in 2003. With the professional assistance and insight of Scott M. Courtney and Melinda K. Tyler, Western Hanover Church began its journey of “making its vision for the future a tangible reality for tomorrow”. The complete staff at Resource always completed its work in a timely manner with an eye to fine detail as well as providing insightful options and well planned alternatives in preparation for any unforeseen obstacles in our building project.

We have a deep appreciation for the professional manner displayed to our leaders and further appreciate the Staff’s impeccable people skills. The competency level of the civil engineering provided us is reflective in the fact that we have not had any questions or difficulties as we have moved smoothly to the completion stage of our present building project. Our decision to secure Resource International has been repeatedly confirmed by the warmth, competency, and graciousness extended to us in every facet of our five year working relationship. If we had to start over, would we secure Resource International again and the answer is a resounding, yes. Also, Resource International will definitely be included in the development in any and all our future projects.

Sincerely,

Terry M. Sharpe

Terry M. Sharpe, Pastor
Western Hanover Church

Congregations that attract young adults and families with children are more likely to experience significant growth. Maybe your church is considering the instructional needs of the community and has the mission to build an educational facility.

TWO OFFICES READY TO SERVE YOU:

9560 Kings Charter Drive
P.O. Box 6160
Ashland, VA 23005-6160
(804) 550-9200

Greenbrier Tower II
870 Greenbrier Circle, Suite 114
Chesapeake, VA 23320
(757) 873-7711

3 EXPERIENCE

Resource has provided numerous religious, institutional, and educational clients with a wide variety of services. Some of our project experience can be found below.

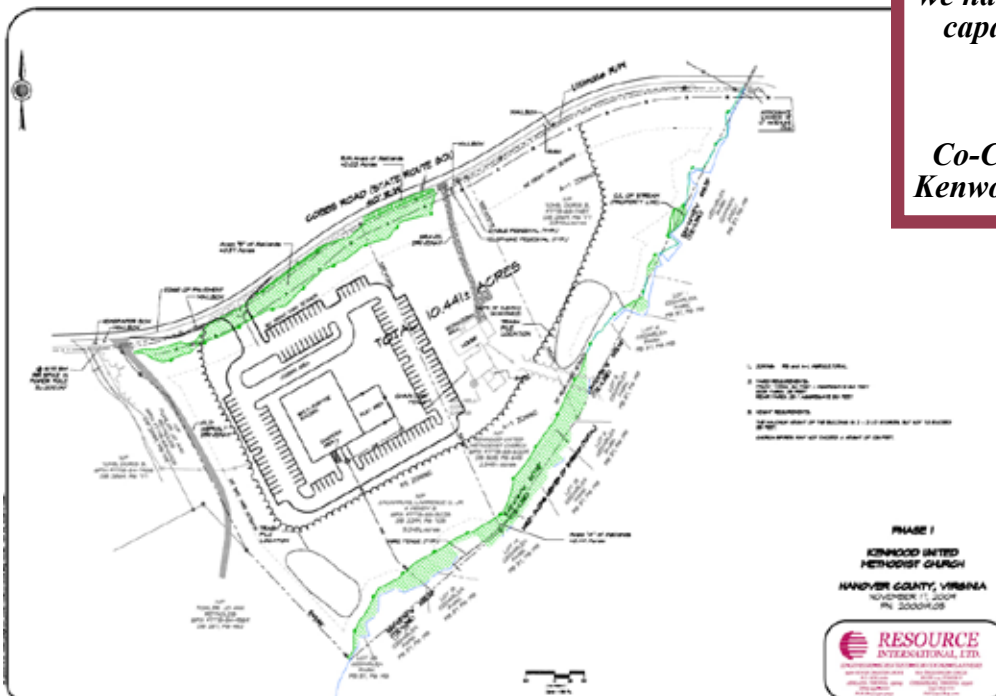
Kenwood United Methodist Church
Glen Allen, Virginia
Contact: Juliet Hildreth

Resource has been working with the church to help them find enough land suitable for the building expansion. Many times they have encountered property that was too wet for development. Just recently, they had an opportunity to acquire the site adjacent to the church parsonage. Resource has attended several meetings to discuss their vision, goals, desires and direction. Based on these meetings, we are working with them to finalize a master plan in conjunction with a Conditional Use Permit, as required by the County. To date, we have provided the following services:

- Topographic/Boundary Surveys
- Wetland Delineation and Corps Approval
- Phase I ESA
- Site Feasibility Study
- Utility Analysis of Prospect Property
- Master Plan Development
- Meetings to Discuss Design/Bid/Build or Design/Build and Potential Architects

"It was evident at our first meeting that Resource was the right partner and we felt very comfortable. As we have begun to work together we have found Resource extremely capable and a pleasure to work with."

Juliette Hildreth
 Co-Chair of Building Committee
 Kenwood United Methodist Church



TWO OFFICES READY TO SERVE YOU:

9560 Kings Charter Drive
 P.O. Box 6160
 Ashland, VA 23005-6160
 (804) 550-9200

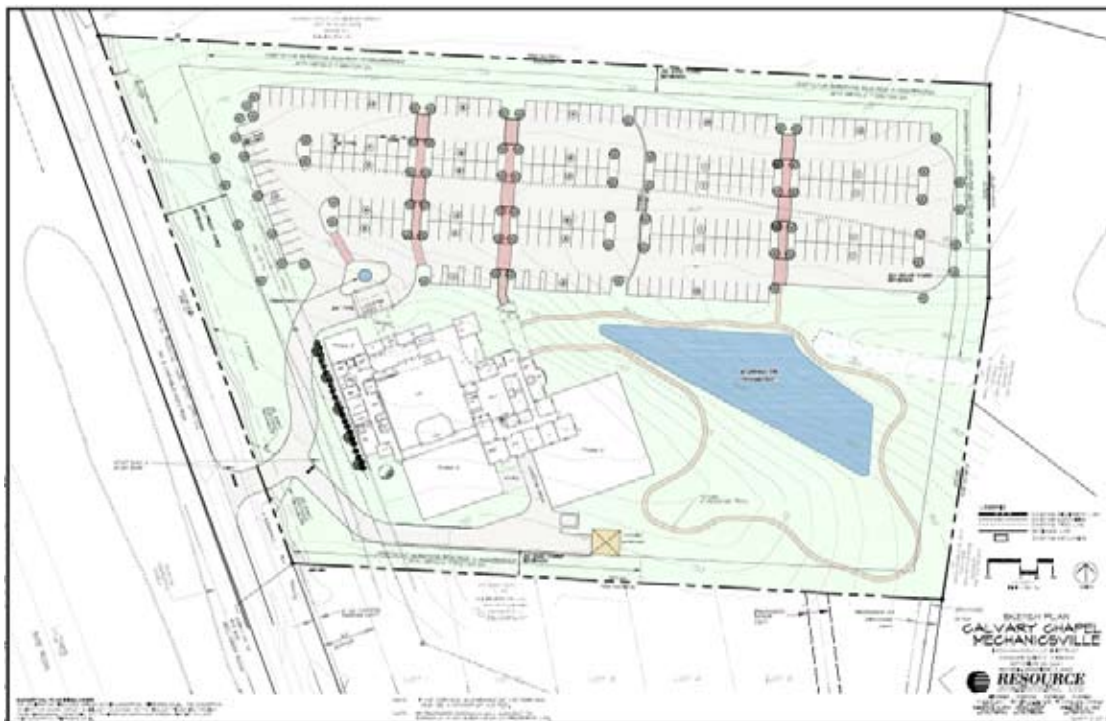
Greenbrier Tower II
 870 Greenbrier Circle, Suite 114
 Chesapeake, VA 23320
 (757) 873-7711

Calvary Chapel Mechanicsville
Mechanicsville, Virginia
Contact: Tom Vaughan

Resource prepared a feasibility report outlining the potential development of the 8-acre site. In conjunction with the report, Resource provided topographic and boundary surveys, as well as a wetland delineation. Given the constraints of the site, a layout of the 34,000 sf building and desired maximum parking lot were generated. Based on the concept plan, a required scope of work and the probable estimate of construction costs were derived for the client's budgeting purposes. Resource presented the plan for Conditional Use Permit to the Planning Commission and Board of Supervisors for approval. Resource then designed the first of two phases of the site. Project included:

- Feasibility Study
- Conditional Use Permit (CUP) Assistance
- Topographic/Boundary Surveys
- Wetland Delineation and Corps Approval
- Early Land Disturbance Plan
- Access To 20,500 sf Building (Phase I)
- Designed 160-Car Parking Lot
- Storm Water Management Facility
- Utility Services, includes Fire Suppression Lead-In
- Lighting Plan
- Traffic Report

*"In the same way, let
your light shine before
men...." Matt. 5:16*



TWO OFFICES READY TO SERVE YOU:

9560 Kings Charter Drive
P.O. Box 6160
Ashland, VA 23005-6160
(804) 550-9200

Greenbrier Tower II
870 Greenbrier Circle, Suite 114
Chesapeake, VA 23320
(757) 873-7711

New Highland Baptist Church
Mechanicsville, Virginia
Contact: Robert Lee, Pastor

Resource has completed several projects for New Highland Baptist Church (New Highland) that included a Conditional Use Permit (CUP) amendment, site plan and a second CUP amendment to meet the church's needs and the County requirements. New Highland's rapid growth and expanding community outreach led the congregation to embark on an expansion that doubled the size of the church. Classroom space, restroom, kitchen and fellowship/gym were added to the existing building. In the course of the project, Resource provided design services for all aspects of the site plan such as the following:

- Water Service Upgrade
- Wastewater Systems Connections
- Site Grading
- Storm Water Management
- Erosion and Sediment Control Plans
- CUP Amendments

Churches that develop a vision are more likely to fulfill their goals than those who do not. It takes intentional planning and action for growth to occur.



TWO OFFICES READY TO SERVE YOU:

9560 Kings Charter Drive
P.O. Box 6160
Ashland, VA 23005-6160
(804) 550-9200

Greenbrier Tower II
870 Greenbrier Circle, Suite 114
Chesapeake, VA 23320
(757) 873-7711

**Western Hanover Church
Montpelier, Virginia
Contact: Terry Sharpe, Pastor**

Resource provided plans for the development of 18-acre site for new church complex. Project will be constructed in multiple phases. The first phase will include 8,000 sf building, 80 car parking lot, septic tank/drainfield and well, landscaping, and lighting. Project requires significant road improvements including turn lane creation and 1,200 lf of transition widening of major arterial road. Additional phases will have more than 11,000 sf of buildings and 200 spaces for vehicular parking.



Congregations located in the suburbs are more likely to experience growth.

TWO OFFICES READY TO SERVE YOU:

9560 Kings Charter Drive
P.O. Box 6160
Ashland, VA 23005-6160
(804) 550-9200

Greenbrier Tower II
870 Greenbrier Circle, Suite 114
Chesapeake, VA 23320
(757) 873-7711

**Carter Woods Assisted Living
Henrico County, VA**

Resource prepared the site plans for both phases of the 100-unit building and 118 space parking lot. Improvements includes grading, drainage, utilities, 0.3 miles of new road construction, storm water management facility, landscape and lighting plans. Resource also provided environmental and survey services for design and construction.



The older adult population is growing at a rate of almost 3 times the average rate of growth. Are you planning a facility for this generation?

TWO OFFICES READY TO SERVE YOU:

9560 Kings Charter Drive
P.O. Box 6160
Ashland, VA 23005-6160
(804) 550-9200

Greenbrier Tower II
870 Greenbrier Circle, Suite 114
Chesapeake, VA 23320
(757) 873-7711

3.1 OTHER PROJECTS

Below is a list of other churches where we have provided services. These range from zoning assistance and concept plans to full site plans and site plan amendments, from parking lot expansions to Phase I Environmental Site Assessments and other services include such items as layout, grading, storm sewer and storm water management, water and sewer services and improvements, landscaping, Chesapeake Bay Preservation Act compliance, as applicable for:

- Messiah Lutheran Church, Mechanicsville
- Grayland Baptist Church, Richmond
- Bon Air Presbyterian Church, Richmond
- Mount Pisgah United Methodist Church, Midlothian
- Cambridge Baptist Church, Henrico
- Dover Baptist Church, Goochland
- Christ Lutheran Church, Henrico
- Kenwood United Methodist Church, Ashland
- Woolridge Road Baptist Church, Chesterfield
- Bethlehem Presbyterian Church, Mechanicsville
- Faith Community Church, Richmond
- Berea Baptist Church, Rockville
- New Hanover Presbyterian Church, Mechanicsville
- Hanover Friends Church, Mechanicsville
- New Deliverance Evangelical Church, Richmond



Bon Air Presbyterian Church

TWO OFFICES READY TO SERVE YOU:

9560 Kings Charter Drive
P.O. Box 6160
Ashland, VA 23005-6160
(804) 550-9200

Greenbrier Tower II
870 Greenbrier Circle, Suite 114
Chesapeake, VA 23320
(757) 873-7711



**Mount Pisgah
United Methodist
Church**



TWO OFFICES READY TO SERVE YOU:

9560 Kings Charter Drive
P.O. Box 6160
Ashland, VA 23005-6160
(804) 550-9200

Greenbrier Tower II
870 Greenbrier Circle, Suite 114
Chesapeake, VA 23320
(757) 873-7711

www.resourceintl.com

**Berea Baptist
Church**



TWO OFFICES READY TO SERVE YOU:

9560 Kings Charter Drive
P.O. Box 6160
Ashland, VA 23005-6160
(804) 550-9200

Greenbrier Tower II
870 Greenbrier Circle, Suite 114
Chesapeake, VA 23320
(757) 873-7711

www.resourceintl.com

4 CONTACTS

If you are contemplating expansion, a new facility, the acquisition of property or just have questions about our other services, we invite you to contact us. We can help your ministry reach into the community.

John Combs, PE
Executive Vice President
johncombs@resourceintl.com

Charles D. Riedlinger, PE
Senior Vice President
criedlinger@resourceintl.com

M. Scott Courtney, PE
Vice President, Land Development
scourtney@resourceintl.com

Michael White, PE
Chesapeake Office Branch Manager
mwhite@resourceintl.com

“He is good; his love to Israel endures forever.” Ezra 3:11b (NIV)

TWO OFFICES READY TO SERVE YOU:

9560 Kings Charter Drive
P.O. Box 6160
Ashland, VA 23005-6160
(804) 550-9200

Greenbrier Tower II
870 Greenbrier Circle, Suite 114
Chesapeake, VA 23320
(757) 873-7711

STATEMENT
OF
QUALIFICATIONS

 **RESOURCE**
INTERNATIONAL, LTD.
ENGINEERS ● SCIENTISTS ● SURVEYORS ● PLANNERS



Headquarters - 9560 Kings Charter Drive * Ashland, VA 23005
(804) 550-9200 * Fax (804) 550-9259
Greenbrier Tower II - 870 Greenbrier Circle, Suite 114 * Chesapeake, VA 23320
(757) 873-7711 * Fax (757) 873-7712
www.resourceintl.com